



# LONG RANGE TRANSPORTATION PLAN AND ROAD INVENTORY

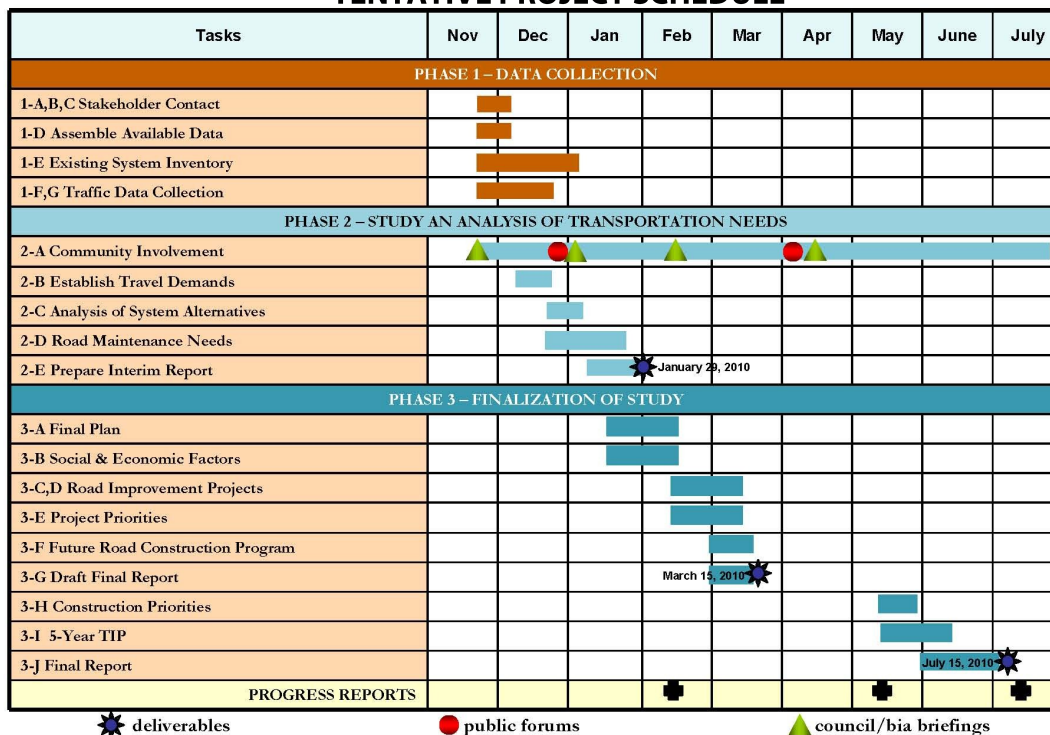
## Study Background

In November 2009, the Ak-Chin Community hired a team of consultants led by *Wilson & Company* to prepare an update of the Community's Long Range Transportation Plan (LRTP) and Road Inventory. The project consists of integration of two processes: an inventory of roadway characteristics and transportation planning. The road inventory provides a clear picture of the condition of existing transportation network serving the Community and, as such, serves as a benchmark for planning improvements to the system. In conducting the planning effort, the consultant team will work closely with Community officials and Community members to clearly identify the Community's specific transportation needs and their priorities, including:

- Overall road network necessary to support the Community's long-term land use objectives
- Access to existing and proposed housing areas
- Access to proposed commercial, industrial, governmental, and recreational developments
- Traffic, pedestrian, and bicycle safety issues
- Measures to address cut-through traffic
- Connectivity both within the Community and to its surrounding area
- Upgrading existing roads to meet design standards and to properly serve the adjacent land uses or projected increases in traffic volumes
- Need for a rural transit program and resulting transit facilities
- Road maintenance
- Non-structural issues, such as a traffic code, enforcement, seatbelt use, child restraints, traffic safety program, ongoing transportation planning activities, etc.

Once tribal transportation needs are assessed, improvement projects can be identified to meet these specific needs and an implementation timeframe can be established based on anticipated funding and the priority of the project.

### TENTATIVE PROJECT SCHEDULE



To find out more information on this project, please attend the Community Meeting on Monday, January 25th.

**Bart Smith**  
Ak-Chin Indian Community  
520.568.1073  
bsmith@ak-chin.nsn.us

### PROJECT CONTACTS

**Amy Moran**  
Wilson & Company  
602.283.2722  
Amy.Moran@wilsonco.com